

The Villager



December 2013/January 2014 Volume 42 No 11
The community newsletter for Mapledurwell
Up Nately, Newnham, Nately Scures, Greywell

Diary Dates

December

- 3 Rowan Lodge Coffee Morning, 11am
- 5 Hartley Wintney Xmas Market 4-8pm
- 5 Whitewater School Xmas Fair 6-8pm
- 5/6/7 Hook Players 'Jack & the Beanstalk'
- 7 Hook Christmas Cracker
- 8 Children's Christmas Party 10-12pm*
Mapledurwell & Up Nately Village Hall
* Note the party has been rearranged to the morning
- 13 Greywell Coffee Morning 10.30-11.30am, Village Hall
- 13 Up Nately Villagers' Coffee Morning the Laurels, Heather Lane
- 15* Children's Christmas Party Greywell VH
- 15* Christmas Carols Greywell Village Hall
* Note, please check website in case date / times rearranged
- 16 Newnham Carol Singing 6pm starting from Old House at Home
- 17 Teapot Cafe from 3pm Greywell VH
- 20 Mapledurwell Carols at the Pond, 6pm
- 24 Crib Service Up Nately 4.30

January

- 10 Up Nately Villagers' Coffee Morning The Boathouse, Greywell Road
- 15 Mapledurwell & Up Nately Parish Council meeting, 8pm Village Hall
- 21 Newnham Parish Council meeting, 7pm, venue tba
- 25 Greywell Mobile Library 10-10.30

Remembrance Sunday Service, 10th November 2013, St Swithun's Nately Scures



Rolls of Honour of their respective Villages

Nately Scures 1914-1918: FF Bond, G Brooks, CF Brown, E Cooper, GF Gregory, CD Grimes, FM Masterman, HR Morris, HA Pearcey, HC Roberts, JS Roberts, SR Robinson, TW Shipway. **1939-1945:** FC Gavid, A Hill, RRE Moxon, DA Vince, FD Warner, A White.

Newnham 1914-1918: WJ Champion, AJ Clark, H Englefield, AV Fitchett, W Gubby, A Holdup, EJ Holdup, HC Lane, WG Lane, J Lever, GA Maconachy, TM Marker, FG Matthews, SJ Morris, V Morris, CH Stent, F Stringer, J Willis, H Young.

1939-1945: A Mackenzie, LRT Mariner, W Maynard.

Mapledurwell 1914-1918: W Ackland, W Bartlett, A Eccott, N Paice. **1939-1945:** R Brown.

Up Nately 1914-1918: A Clark. **1939-1945:** F Evans, A Woodbridge.

Greywell 1914-1918: T Dawson, WJ Dicker, C Holloway, F Holloway, A Pink.



CHRISTMAS SERVICES IN THE FIVE VILLAGES 2013



Please join us for any of the special festive services

Saturday	December 21st	
4pm	Carol Service	Newnham
5.30pm	Carol Service	Up Nately
Sunday	December 22nd	
11am	Carol Service	Nately Scures
4.30pm	Carol Service	Mapledurwell
6pm	Carol Service	Greywell
Tuesday	December 24th – Christmas Eve	
4.30pm	Crib Service	Up Nately
11.30pm	Midnight Mass	Nately Scures
Wednesday	December 25th – Christmas Day	
9.30am	Holy Communion BCP	Up Nately
9.30am	Family Service	Mapledurwell
10.45am	Family Communion	Newnham
10.45am	Family Service	Greywell



With every good wish for a very Happy Christmas and a peaceful New Year

Jane Rev Jane Leese



Mapledurwell & Up Nately

We welcome John, and Christina Johnson and their children Carley and Morgan who have come to live at Hill Cottage Up Nately. We hope you will be happy here and join in village and village hall events!

The next Up Nately Villagers' coffee mornings will be held on Friday 13th December at the Laurels, Heather Lane, phone Moira on 763894, and 10th January at The Boathouse, Greywell Road, phone Jenny on 762 741.

A huge thank you to Mapledurwell & Up-Nately for contributing 20 Christmas presents I needed for those children in Basingstoke, you will make them very happy on Christmas Day! 'Ho Ho Ho!' And thank you again, Ann of Kingfisher, Mapledurwell.



CHRISTMAS AT ST STEPHEN'S UP NATELY

Please join us for the Carols Service on Saturday 21st December, 5.30pm. And by popular demand there will be a Crib Service for young children on Christmas Eve at 4.30pm at St Stephen's. All families from across the villages are welcome to join us. There will also be a service of Holy Communion on Christmas morning at 9.30.

CHRISTMAS AT ST MARY'S MAPLEDURWELL

JOIN US FOR CAROLS AT THE POND at 6pm on Friday 20th December and enjoy mulled wine and mince pies. There will be a collection for the Children's Society.

The church Carol Service is at 4.30 on Sunday 22nd and the Family Service at 9.30 on Christmas Day.



Moo-ving on Up... The residents of Up Nately had great fun watching a herd of about 35 young cattle walking around the village in November, they had escaped from their field and decided to visit us in Heather and Heather Row Lane as well as the Greywell Road.



SHOE BOX APPEAL Very special thanks to all who supported the Shoe Box Appeal, for providing inspiring gifts for deprived children in Romania and Moldova, for the hand-knits from Villagers, especially the teddy bears, and the help with covering boxes, filling them and for the transport. An amazing 130 boxes were filled and are now on their way overland to reach the children in time for Christmas. Thank you for your support to a very worthy cause. Patricia Stubbs.



MAPLEDURWELL & UP NATELY CHILDREN'S CHRISTMAS PARTY



Sunday 8th December
from 10am to 12 noon in the Village Hall

Please note the party has been rearranged to the morning (not afternoon as previously advertised)

Good old fashioned party games and a visit from Father Christmas!

The Elves would like to prepare a small gift for each child before Santa's visit so please contact Faye Caller on 07917 556481 or faye.caller@hp.com to reserve your ticket. Please note that entrance will be by ticket only so please make sure you reserve to avoid disappointment.



Every week the hall hosts a variety of different activities including Kingfisher Training, Alison Howard keep fit class, Monkey House Nursery School. see www.mapledurwellvillagehall.com

To hire the Village Hall, contact Caretaker Jayne Norman on 474 432. To book the playing fields call: David Ellison on 478 810.

Season's Greetings from the Village Hall Committee

PARISH COUNCIL NEWS

Mapledurwell allotments available to residents of the Parish of Mapledurwell & Up Nately. This includes one established plot. Please contact Russell Price on 329 680 for further information.

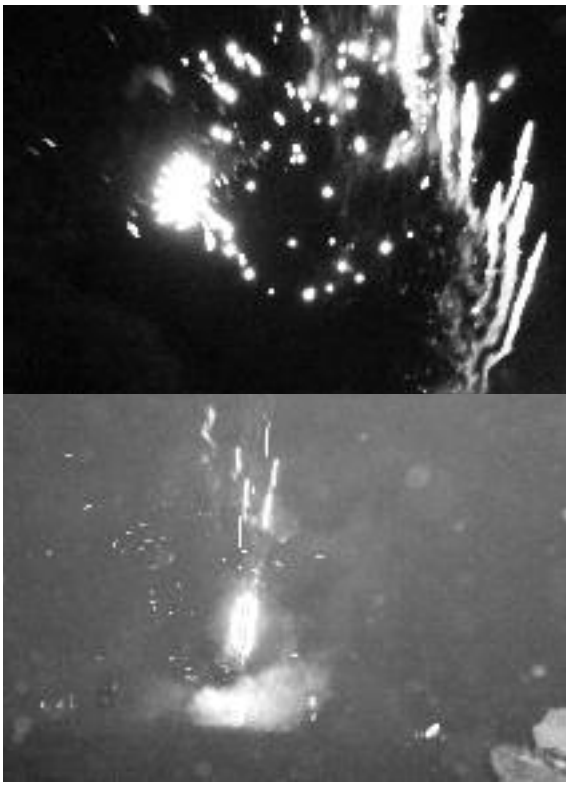
Community Speedwatch

The Parish Council would like to know if anyone would be interested in helping to set up and run a Community Speedwatch scheme. Please contact Tom Horsey on 762 858 for more information.

Next Parish Council meeting will be held on Wednesday 15th January at 8pm, Village Hall. All welcome.

Mapledurwell & Up Nately Parish Council would like to wish everyone a happy Christmas and a prosperous New Year.





Bonfire Night at Mapledurwell, Saturday 2nd November

Due to the high winds we could not light the bonfire but the fireworks were fantastic.

Many thanks to

Robin and Jane Stevens for the loan of their field again and the generosity of the Friends of St Mary's who donated the fireworks

and the team who worked tirelessly building the bonfire, erecting the tents which all collapsed or ended up in the hedge because of the wind and provided mulled wine...

It was a good event and well attended despite the adverse weather, thank you all.

PARISH PLANNING APPLICATIONS

New applications

T/000914/13/TCA Addison Cottage, Tunworth Road, Mapledurwell. Notice of intent to fell 1 Lleylandii.

13/02230/RET (1st Nov) Pennybridge Farm, Up Nately. Retention of agricultural works timber cabin.

13/02165/HSE (11th Nov) Swanhill, Greywell Road, Mapledurwell. Single storey extension to east elevation.

Pending decision

13/00996/FUL (12th July) Greenacres, Down Lane, Mapledurwell. Erection of replacement dwelling and detached double garage.

13/00772/FUL (1st July) Land at Nunnery House, Tunworth Road, Mapledurwell. Detached one and a half storey 2 bedroom lifetime dwelling.

Granted

13/00937/FUL (11th Nov, reg 15th July) Andwell Trout Farm, Andwell Lane. Erection of two B2 light industrial units following the closure and demolition of the existing trout breeding maze raceway and the formation of a new wildlife water area following the closure and demolition of the existing trout breeding tanks.

T/00863/13/TCA Ashlea, Tunworth Road, Mapledurwell. Notice of intent to remove damaged limbs and crown raise up to 8m one ash.

EVENTS OUT & ABOUT



Hook Players'

'**Jack and the Beanstalk**' at the Elizabeth Hall, Raven Road, Hook at 7.45pm on Thursday, Friday, Saturday, December 5th, 6th and 7th. Matinees on Saturday at 1.45 pm. Tickets £12 (and £9 matinees) from the Box office 07709 214 679, Trees newsagents in Hook or www.hookplayers.co.uk.

Hartley Wintney Christmas

Market in the High Street, Thursday 5th December, 4-8pm. Santa Claus is visiting from 4.30pm. Carols on the Common at 6pm. Fireworks at 8pm.

Whitewater School Christmas

Fair Thursday 5th December 6-8pm in Rotherwick Village Hall.

Hook Christmas Cracker Saturday evening 7th December. Shops and pubs will be open, Street Entertainers, Miller's Ark mobile farm, Walls Funfair, Christmas Market.

Mobile Library Service

F/borough Mobile Library, week 2

Saturdays – no service in Dec – 25th Jan, 22nd Feb, 22nd March

10-10.30 Greywell Village Hall

10.45-11.20 Water End Park

11.30-12 Newham Green

F/borough Mobile Library, week 3

Thursdays 5th Dec, 2nd Jan, 30th Jan, 27th Feb, 27th March

09.45-10.15 Linden Spar Old Basing

Saturdays 7th December, 4th Jan, 1st Feb, 1st March

12.30-13.00 Rotherwick nr school

www.hants.gov.uk/library

email library@hants.gov.uk

tel 0845 603 5631 or 01329 225 391

News from Odiham Cottage Hospital



By the time of reading this, we will have said our thanks and goodbyes to Audrey Shelbourn as she retires as manager of the League of Friends' shop in Odiham. Audrey will be greatly missed as she has given so much to the shop over so many years, raising many thousands of pounds to support the work of Odiham Cottage Hospital.

It is inevitable that some of Audrey's volunteers will take the occasion to consider their own future and we wish them all, and Audrey, a long and very happy retirement.

As the evenings draw in and the weather means there is less inclination to spend time in the garden, you might consider

giving a few hours each week to join our team of volunteers – either on a regular or ad-hoc basis. We would love to hear from you – please call Charlotte Crawley, Head of Retail on 07712 305137 for further details.

Planning for our new Befriending Service for patients and their families who are suffering from end of life conditions continues. Run by St Michael's Hospice, the service is funded by OCH Charitable Trust and will initially serve the residents of West Hart. Volunteers interested in working with us should contact me for further details.

Our free 'Sunshine and Showers' weekly self-help group, for those suffering from mild to moderate depression or



anxiety has gone from strength to strength and a Wednesday afternoon session has been started in addition to Tuesday evenings. Further details are available from the organisers, Hart Voluntary Action Group on 01252

815652. Why not give them a try; it could be the lift you are waiting for.

One of the very few drawbacks of living in a village or rural community is that transport can be problematic and we are most grateful that the vast majority of services we provide at the hospital are supported by the local Voluntary Care Agency drivers. Their contact details are provided elsewhere in this magazine.

Ginny East tel 01256 393 600
email och1@btinternet.com,

Newnham & Nately Scures



CHRISTMAS AT ST SWITHUN'S NATELY SCURES

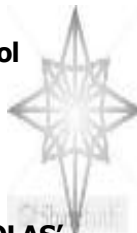
Please join us for the Carol Service on Sunday 22nd December at 11am and for Midnight Mass at 11.30pm on Christmas Eve.

CHRISTMAS AT ST NICHOLAS' NEWNHAM

Newnham carol singers please meet outside the Old House at Home at 6pm on Monday 16th December for Carol Singing around the Green to end at Manor Farm.

Families and Children of all ages are welcome to the Christingle Service on Sunday 1st December at 4.30pm.

Also please join us for the Carol Service 4pm on Sunday 21st and the Family Communion at 10.45 on Christmas Morning.



Thank you to John Broughton and his team for the Newnham Village Litter Pick on Saturday 2nd November.

Thanks also to the Green Working Party of Tuesday 26th November: June James, John Broughton, Nigel Downes, Peter Brown and Clive Pinder.

PARISH COUNCIL NEWS

The Parish Council meeting of Tuesday 19th November included discussion on the Budget for 2014/15. The General Grant to Town and Parish Councils from BDBC is unchanged at £1,100 and the grass cutting grant remains at £290. The Parish Council agreed to increase the Precept request by five per cent. This allows the Parish Council to cover budgeted expenditure and also maintain reserves to allow for bus shelter replacement or support for road safety projects.

The Newnham Village traffic calming scheme is still on schedule for implementation in April 2014.

Next Parish Council meeting Tuesday, 21st January.

Newnham Parish Council would like to wish everyone a happy Christmas and a prosperous New Year.

Please visit us on Facebook at <https://www.facebook.com/pages/Newnham-Nately-Scures-Water-End-Parish-Council> and at the Website <http://www.parishofnewnham.org.uk>



PLEASE HELP US TO CREATE A CANCER CENTRE OF UNIQUE EXCELLENCE



We need your help. A much needed cancer centre is to be built in North Hampshire offering cancer treatment to local people.

The Ark Cancer Centre Charity is raising £5 million towards a cancer centre, to be built by Hampshire Hospitals NHS Foundation Trust. Our involvement will ensure the provision of a range of complementary and support therapies in one inspirational building that will offer a therapeutic, healing environment.

Chemotherapy treatment is already available in Basingstoke and Winchester, but patients have to travel to Southampton or Guildford for radiotherapy. This can mean a journey every day for up to six weeks when patients are feeling unwell and vulnerable.

Our approach will be to ensure that all support services and complementary therapies are available alongside the chemotherapy and radiotherapy treatments in one unique local cancer centre.

With your help we can provide the care and support that local cancer patients, their families and friends deserve.

Newnham Fundraising

Most of us know someone whose life has been affected by cancer. Many of us will experience it in some form ourselves. The opportunity to support the creation of a world class cancer care centre, right here on our doorstep, is one we had to support. So a few of us here in Newnham organised an event for 54 lucky people using our local facilities and businesses.

On Friday 8th November our guests came to St Nicholas'. The church looked stunning, lit by candlelight all along the pathway from the lychgate. Chris James, our local singer-songwriter, performed a selection of his own songs, ending with his newly penned *If The Whole World Ends Tonight*. East Londoners, Andy and James, entertained us with some well known classics, which ended with the audience on its feet, singing along.

We all walked across the Green to the Old House at Home watching a fantastic display of fireworks. Delicious food prepared by Ollie & Suky and their team made our evening really special. The wines were provided by Majestic and to cap off the night, 'goody bags' were provided from Newlyn's Farm Shop and Moutan.

Thank you to everyone who contributed to a memorable and rewarding evening which raised £2,500 for The Ark Cancer Centre Charity. June James & Clive Pinder.



THE CLUBROOM is for hire from £12 per hour inclusive. Tables and chairs may be borrowed for use at your own venue for £3 and 50p respectively – hirer collects. Call Rosemary on the Clubroom booking line 07435 782 122.

PLANNING APPLICATIONS

New applications

13/02101/HSE (21st October) Brambles Newnham Road. Erection of single storey extensions to rear of bungalow incorporating a partial second storey within existing attic space with balcony. Erection of single storey extension to front and porch and construction of inglenook fireplace involving a side extension

Applications pending

T/00885/13/TPO (14th October) Middlewood, 7 The Baredown, Nately Scures. Reduce one Horse Chestnut by approx 50 per cent.

13/01460/FUL (13th August) Oakfield Farm Court, Scures Hill. Erection of a detached house and garage.

SOLVE

Save Our
Loddon Valley
Environment



LOCAL PLAN - DISASTER

BDBC's Planning and Infrastructure Overview and Scrutiny Committee (P&I OSCOM) met on 14th November to consider issues raised through the Pre-submission Local Plan consultation which include recommendations for further work and a requirement for a further Public Consultation. A new timetable is proposed which means the plans will not be adopted until 2015.

Further work required includes:

The Borough's objectively assessed housing need. Developers have made alternative proposals for a higher housing allocation – Taylor Wimpey has submitted a comprehensive 174 page report. They want a massive increase in housebuilding in Basingstoke. In essence it would increase the number of houses in the Borough by 50% during this plan period. Their main aim is the release of land for housing which will cover much of the Loddon Valley.

Amendments to site allocations, including the identification/assessment of new ones, as suggested by respondents. This includes changes to the 'East of Basingstoke' site adjacent to the Pyotts Hill and Chineham

now that the landowner, Hampshire County Council (HCC), has confirmed its allocation of only 450 houses on this site up to 2029.

Latest – Taylor Wimpey has submitted proposals for a new site East of Old Basing – Hodds Farm, between the A30, the railway line, Ashmoor Lane and Old Basing, for around 1,000 houses. This points the development gun east towards Newnham.

Our lawyers warned the Council about Manydown being unlawful... they didn't listen; and we warned them that HCC was only promoting 450 homes on Pyotts Hill... they didn't listen!

SOLVE suggests that to relieve the pressure on the Borough's land and financial resources BDBC should take full advantage of the Manydown site bought with ratepayers' money explicitly to manage the expansion of Basingstoke. This would also release funds needed to invest in infrastructure without raising additional taxes.

Without a Local Plan all Greenfield sites, including the Loddon Valley, are at risk from developers. It is now impossible to predict where and when this will all end.

Peter Bloyce, SOLVE



POLICE UPDATE

Dear Residents

As Christmas approaches I ask all residents to be more

vigilant and take basic crime prevention steps to protect their homes and property. At the time of writing, (November), only one month during 2013 showed an increase in reported crime on this beat area, however, sadly our dwelling burglary rate has risen considerably. In 2012 only two offences were reported; up to November we have had eight homes broken into. I am pleased to report that a man has been arrested on suspicion of committing three of them, but eight families have had to endure the fact that their homes and lives have been violated. We know that at least half of these crimes were committed during the day, but I continue to urge residents to leave lights on, a radio on, if possible a car on the driveway, curtains closed if you go out, use light timers and consider censor lighting high up on your house – burglars don't want to be seen during the day or night.

I will provide a more detailed update of reported crime during the year for each parish in the New Year. May I also ask residents to keep an eye on our churches after recent incidents not far from our area in which we have had church premises broken into and thefts of church property.

At the Hollies this year to date we have had two cycles stolen from the communal sheds and a lock damaged. Both Mapledurwell Parish Council and I have raised the security issues with the Housing Association concerning these communal stores. I ask that residents please keep an eye out and report any strangers or anyone acting suspiciously to the Police at the time. Please ring 101, or if a crime is taking place please dial 999, we will not be annoyed if it turns out that the call was false but made with good intention.

We have also had several road traffic incidents (accidents) of late in our area, and I have noticed several vehicles driving around with defective lights. I ask all motorists to please check that all your vehicle lights are in full working order and to give them a wipe over to keep them clean.

May I take this opportunity to wish you all a very Merry, Safe and Secure Christmas and Happy 2014

Andrew Reid, Constable
01256 389 050 07768 776 844
andrew.reid@hampshire.pnn.police.uk



Rowan Lodge Nursing Home

Our Bonfire Coffee morning and card sale was a success and a great start to the day, it was good to see some of you with us. Our chef produced a super Bonfire Cake with indoor firework, a definite contender for next year's Bake-off!

The Festive Season is well and truly upon us and a busy month we have planned here at Rowan Lodge with many trees for us to put up throughout our big home and everyone's hands on deck to help decorate them all. Here is a list of our festive events for which you are very welcome to pop in and join us..

Tuesday 3rd December 11am Coffee Morning with 'Comfort Clothing' who have good quality separates to purchase – *pop in for a mince pie!*

Saturday 7th December 2pm Greywell Bell Ringers

Monday 9th Dec 2pm 'A Sprinkle of White Christmas' with Trisha Lewis

Thursday 12th Dec 2pm Rapunzel Show with Troubadour Entertainers.

Thursday 19th December 3pm Our own Christmas Carol Service with Jane Leese & singers. *Mince pies & mulled wine!*

Saturday 21st December 2pm PARTY TIME! Wendy to sing and entertain us, Raffle, Magic Mark, mulled wine. *Friends & family all welcome!*

Christmas Eve 2pm Christmas Eve Party with Entertainer, Ian, *party Tea!*

Christmas Day Festive Pink Ladies to 'Be Santa' and spread cheer & gifts!

New Years Eve 2pm Our home New Year's Party with Tony to entertain us.

We would like to take this opportunity to thank you all for your support throughout this last year and to wish you a very Merry and Peaceful Christmas time and a Happy, Healthy New Year 2014 from all of us at Rowan Lodge Nursing Home.



Greywell

Friday Coffee Mornings

in the Village Hall 13th December, 10.30-11.30.

Coffee & Mobile Library

Saturdays There is no Greywell Mobile Library service in December. The Mobile Library will be outside the Village Hall between 10am & 10.30 on 25th Jan and 22nd Feb.



THE TEAPOT CAFE

will be open at **3pm on Tuesday** 17th December. If you need a lift please give Jackie Giles a call on 702 859.

PARISH PLANNING

New application 13/02392/CA (11 November) Weston House, The Street. Notification of Proposed Works to Trees in a Conservation Area. The tree (T1) requires regular maintenance to prevent it dominating the house and the garden. On this occasion we wish to reduce the crown to 6-7m both in height and diameter and thin the crown by 50%.

No objection 13/02081/CA (20th November, reg 3rd Oct) 2 Horseshoe Cottage, The Street. Application for works to trees in a Conservation area. Fell one Walnut tree.

Applications withdrawn 13/01702/HOU and 13/01703/LBC (18th October, reg 3rd September) Rose Cottage, Hook Road, Greywell. Erection of single storey sun room to rear, construction of a bedroom over the existing kitchen to the rear.

Application refused 13/01990/FUL (25th November, reg 30th Sept) Dunromin, Hook Road, Greywell. Alteration to first floor to include a new roof and construction of a new garage. Change of use of lane from agricultural to residential.

Construction of (UV) disinfection plant at Greywell Water Treatment Works Work is due to start on November 25th and is expected to be finished by the end of April 2014. (See 13/01430/FUL granted 16th September 2013) Greywell Pumping Station Deptford Lane. The temporary installation for six years of two containers housing ultraviolet (UV) disinfection plant.)

CHRISTMAS ST ST MARY'S GREYWELL

The Carol Service

This year's Carol service at St Mary's will be at 6pm on Sunday 22nd December. Do come along to our service of carols and readings and bring your families and friends. See the church decorated and in candle light to celebrate our Saviour's birth.



The Christmas day service

is at 10.45am when we will be gathering for an informal Family Service of praise and celebration. Do bring all your visitors too.

NEWS FROM GREYWELL VILLAGE HALL

Village Quiz Thanks to Paul and Viv Harrison and their band of helpers for organising a fun quiz on 23rd November. Twelve teams took part, enjoying a variety of brain teasers. The worthy winners were David & Helen Millard and Rob & Vivian Caird. Usually the winners set the quiz for the following year, but as the Millards and Cairds have already set the quiz three or four times, the runner up team happily volunteered to take up the challenge.

Craft sale Apologies from Sue Braine that the Craft sale scheduled for 30th November was cancelled. Sue hopes to re-arrange another date.

NEW - Relaxation Classes Christopher Bray is holding a de-stress relaxation group every Monday evening at 7pm in the Village Hall. It's approximately 40 minutes and costs £5.50 per person. The process is a combination of Eastern & Western methods that will aid in the reduction of stress, anxiety, aches & pains, insomnia, hypertension, hot flushes, depression, weight gain... It is titled as 'The UK's No1 Healthier Mind & Body System'; to know more or to book, contact Christopher on 07553 351 746 or visit his website <http://www.1nsync.co.uk/>.

Children's Christmas Party and Christmas Carols

Please check the village website and look out for emails concerning these events as times, dates etc may change (previously advertised for Sunday 15th December).



Supper Evening, Saturday 1st February 2014 An informal supper evening is planned for early in the new year, details to follow. Save the date!

To hire the Village Hall please contact helenjullivan@gmail.com.

Marquee hire (within Greywell) mike@cmburnside.fsnet.co.uk.

GREYWELL PARISH COUNCIL NEWS

Greywell Parish Newsletter

First issue published on 27th November on the village website <http://greywell.info> and emailed to residents. This is an 'occasional' publication featuring current issues on which the Parish Council is actively seeking feedback. If you have not received an e-copy or would like a hard copy, contact Jules Stanley on 701 624 or julian.stanley2@btinternet.com.



information, news and notices to our own community, we have a password protected access system to retain security.

At the moment have over 60 'members' although that is far from everyone in the village. So, we are appealing for more local people to register and to receive email alerts through the website.

You can check out the minutes of parish council meetings, village assemblies and accounts as well as church and village hall developments. If you have not already done so, please check out the site and join.

Community SpeedWatch

Speeding is one of our biggest community concerns in the village, potentially affecting road safety and impacting on our day-to-day lives. Traffic calming measures are an old chestnut and the recent introduction of 'Slow Down' stickers for our village wheelie bins does not seem to have deterred some speeding drivers either.

Village Website

Our new village website went live last year at <http://greywell.info>. This is a joint venture between the Parish Council, Church and Village Hall.

As many of you will know, there are several levels of access to the site, including open information for the whole world. However, to bring special

Church Notices

From the Parish Registers...

We baptised

at St Stephen's Up Nately
Ruby Grigg, on Sunday
November 24th.

We gave thanks for the life of

Eric Hillier of Old Basing
at Basingstoke crematorium
on Thursday November 21st.

December diary dates

- 1 Sunday, 12.30pm, baptism at Greywell – Isabella Bicknell
- 2 Monday, 7.15pm, SingUp rehearsal
- 3 Tuesday 8pm, Newnham VCC
- 15 Sunday 2.30pm, Baptism at N/Scores – Daisy Fitchett
- 16 Monday 6pm, Newnham Carol Singing
- 19 Thursday 11am, Midweek Communion
- 19 Thursday 3pm, Carols at Rowan Lodge

Remembrance Day Service

Thank you to the good folk of St Swithun's and the SingUP singers for a very moving and memorable Remembrance Day service. Our guest speaker, Major-General James Gordon was much appreciated by the packed church.

Christmas Remembrance

Christmas is an especially difficult time for those who have lost family or friends – and this year I would like to offer an additional act of remembrance in our churches.

GREYWELL PARISH COUNCIL NEWS (cont)

As an alternative to an expensive highways construction project, we are launching our 'Community Speed Watch'. This is co-ordinated by our 'police safer neighbourhood team' in partnership with the Parish Council and we are asking for willing volunteers to help operate the scheme.

How does it work? Volunteers work alongside police officers to identify vehicles that exceed the 30mph limit at approved locations around the village. Registration numbers are submitted for entry onto a database and the registered owner of the vehicle is sent a police warning letter.

We need a minimum of six volunteers who must be at least 17 years of age. Specialist training will be given and volunteers will be covered under Hampshire Constabulary's public liability insurance. For more information visit www.hampshire.police.uk or you can volunteer direct to the Parish Clerk, Jules Stanley, on 701 624 or julian.stanley2@btinternet.com.

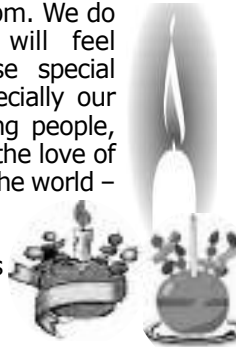
Name tags will be available in each church for you to fill out with the name of someone you will miss very much at Christmas and these will be hung on the Christmas tree throughout the Christmas season. The evergreen Christmas tree reminds of the everlasting love of God that holds us all, living and departed, together in his arms.

Mid-Week Holy Communion

We would love to welcome you to our Christmas mid-week service of Holy Communion, which will be on Thursday December 19th at 11.00am. Please phone Jane (765547) to confirm the venue – or to ask for a lift. It is a traditional service, with a chance to discuss the reading, pray for loved ones and it is followed by coffee and cakes!

Christingle Services

There are two Christingles still to come – in Newnham on December 1st and Mapledurwell on December 8th, both at 4.30pm. We do hope everyone will feel welcome at these special services, but especially our children and young people, as we remember the love of Jesus the light of the world – with the help of juicy oranges, sweets and raisins and candlelight!



Crib Service

Due to popular demand there will be a Crib Service for little children on Christmas Eve at 4.30pm at Up Nately Church. All families from across the villages are welcome to join us for this simple retelling of the Christmas story.

Looking Forward to 2014

Plough Sunday... a first in recent years! Come along to St Swithun's Nately Scores on Sunday January 19th at 11am as we bless the ploughs at the start of the New Year and express our care for the farming families around these villages. This service replaces the Matins and the Family Service usually held at this time and so we hope you will all come – young and old – to see the ploughs and tractors gathered outside the church and to sing some well-known hymns. The service will be followed by a Ploughman's Lunch in the barn.

Lent Studies It seems that we have no sooner packed away the Christmas decorations and eaten the last of the Christmas cake, when Lent is upon us. Ash Wednesday is on March 5th next year and we shall be having a very special series of Wednesday Lent Studies led by the Bishop of Basingstoke, Rt Rev Peter Hancock. More details in the next Village.

Quiet Day at Alton Abbey In preparation for Lent I have booked a Quiet day at Alton Abbey for the United Parish – on February 27th – arriving for Holy Communion at 9.00am and leaving at about 4.00pm. The cost is £23 per head and you are asked to bring a packed lunch. I hope we shall be given one address by a member of the community, but the rest of the time is yours to read, draw, sew, walk, think, pray – whatever helps you to feel the peace and joy of God's presence. There are just 20 places available, to be allocated on a first come first served basis. Please give your name to Rev Jane if you would like to reserve a place.

In the Untied Parish a grand total of £748 was raised by this year's Ride and Stride for the HHCT (Hampshire and the Islands Historic Churches Trust) in their 25th year. Many thanks to all who cycled, walked, helped and sponsored. Our local churches share 50/50 with the Churches Trust who give grants to churches throughout Hampshire. Thank you again.



Mothers' UNION

North Hant Downs MU

On Thursday 5th December we will meet in the NextDoor Bistro for coffee and mince pies. This gives a chance for people who cannot come to evening meetings to come for fellowship and refreshment just before we are all snowed under with Christmas activities and preparations.

The Mothers' Union is based firmly on prayer both for our work here, and for members in other parts of the world. The MU divides the year into five-day periods when members of the Mothers' Union pray for a particular group of dioceses. Winchester diocese has its turn between 21st and 25th January, along with Muhabura diocese in Uganda; Algoma and Saskatchewan dioceses in Canada; Masasi diocese in Tanzania, and Kajo-Keji diocese in Sudan. Our branch will mark this with a Wave of Prayer service on Thursday 16th January in the RAF Church at 8pm. Non-members are very welcome to join us at this service or at any of our meetings. If you want more information, please don't hesitate to contact me.

We wish you all a very happy Christmas
Sue Murphy 01252 845 011



From The Rectory

Up Nately, RG27 9PL 01256 765 547
reverendjane@hotmail.co.uk

Dear Friends

It wouldn't be Christmas without... the family gathered together ... turkey and all the trimmings ... the Queen's Speech ... a bulb going on the Christmas tree lights ... tinsel and decorations ... a dawn start for the children and cries of 'he's been!' ... a game of charades ... the Morecombe and Wise Christmas Special ... Nine Lessons and Carols ... a wonderful pile of presents under the tree ... eating and drinking far too much ... singing 'O Come all ye Faithful' at least five times ... discarded wrapping paper littering the house ... Grandad wearing his paper hat all day long ... the children gathered round the crib singing 'Away in a Manger' ...

Whatever it is that makes Christmas special for you, please don't forget that the only reason it is Christmas is because God wanted to be so completely involved in the world he had made that he came to live here, as one of us, as Jesus. It is his birth we celebrate, year after year, in story and in song, with family and friends, with presents and parties and so....

It really wouldn't be Christmas without the birth of Jesus Christ!

I do hope your Christmas is peaceful and joyful and everything you want it to be.

With my love to you all

Jane

Rev Jane Leese

Villager Contact Details

Editor Sue Turner 07515 777060 newnham.clerk@btinternet.com

Treasurer Charlotte Ridgwell, Butterwood, Greywell RG29 1BU
charlotte.ridgwell@yahoo.co.uk

Distribution Robin Howard 07799 664 454

Mapledurwell & Up Nately: Lorna Cuthill (Maple) 354 651
Liz Preece (Up Nately) 762 059 Parish Clerk Alison Edwards
780 122 clerk.mapledurwell upnately@parish.hants.gov.uk

Greywell Helen Sullivan helenjsullivan@gmail.com
Parish Clerk Julian Stanley julian.stanley2@btinternet.com

December Church Services

December 1st

8am	Holy Communion (BCP)	Nately Scores
9.30am	Holy Communion (BCP)	Mapledurwell
11am	Morning Service	Greywell
4.30pm	Christingle/Patronal	Newnham

December 8th

8.30am	Holy Communion (BCP)	UP Nately
11am	Holy Communion (CW)	Greywell
11.15am	Matins	Newnham
4.30pm	Christingle	Mapledurwell

December 15th

8.30am	Holy Communion (BCP)	Greywell
9.30am	Holy Communion (CW)	Mapledurwell
11am	Family Service	Up Nately
11am	Matins	Nately Scores

Please come and join us for any of the special festive services around the Villages - see front page

December 29th

10am Benefice Service at All Saints' Odiham

January Church Services

January 5th

8am	Holy Communion (BCP)	Nately Scores
9.30am	Holy Communion (BCP)	Mapledurwell
11am	Morning Service	Greywell

January 12th

8.30am	Holy Communion (BCP)	Up Nately
9.30am	Family Service	Mapledurwell
11am	Holy Communion (CW)	Greywell
11.15am	Matins	Newnham

January 19th

8.30am	Holy Communion (BCP) at greywell
9.30am	Holy Communion (CW) at Mapledurwell
11am	Plough Sunday service at Nately Scores

January 26th

8.30am	Holy Communion (BCP) at Newnham
9.30am	Morning Prayer at Mapledurwell
9.30am	Matins at Up Nately
10.30am	Family Service at Greywell

advertisement

SEASONED LOGS FOR SALE

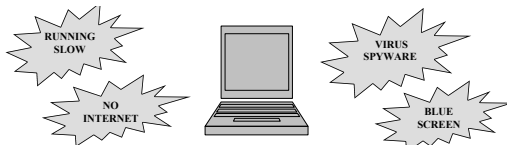
£100 per load
£60 per half load

Phone Matt

01256 972 040
07900 523 437

advertisement

CONFUSED BY YOUR COMPUTER? TROUBLED BY YOUR TELEVISION SET?



ON SITE SERVICES INCLUDE
PC/Laptop support, repair & service
Virus/Spyware removal
TV, Audio, Video repair & service

Prices from
£45 on site
Covers the first
Hour

Regular maintenance keeps your Computer clean & fast

DIGITAL SWITCHOVER

Tuning and setup
Supply and install Freeview receivers
Convert your old TVs from Analog to Digital
Advice & support

Prices from
£35

Making the transition to Digital as smooth as possible

Phone IAN

01256 701 480 07719 738 897

imcs@hotmail.co.uk

advertisement

Kevin Curtis

Carpenter & Joiner



ALL TYPES OF CARPENTRY AND JOINERY WORK

FREE ESTIMATES, PROMPT PROFESSIONAL
ADVICE & RELIABLE SERVICE

Evenings 01256 762 094

Mobile 07900 691 605

Email kcurtis612@btinternet.com

Checkatrade membership number 230871